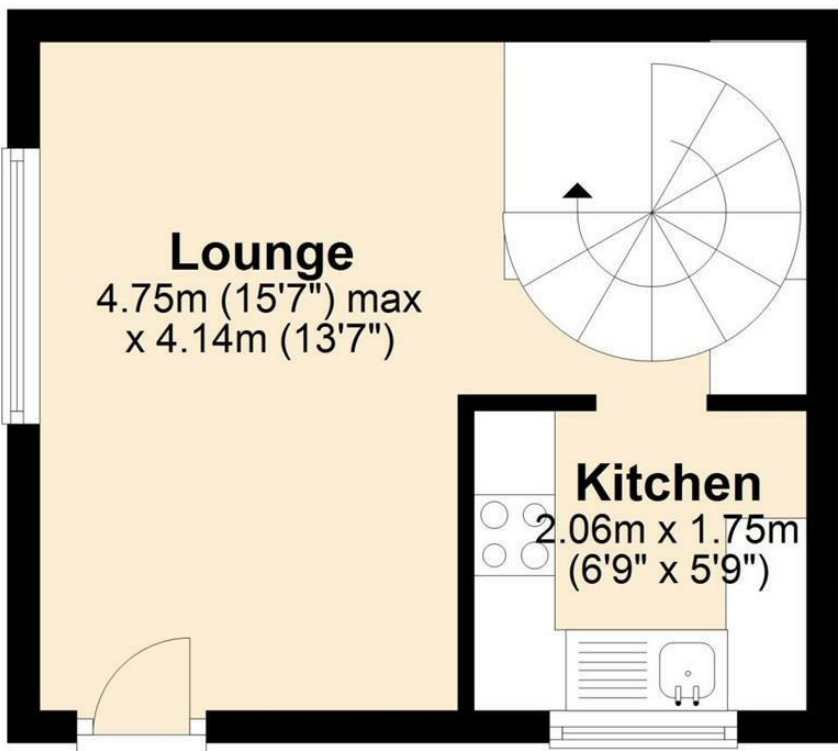




Pages Close | Wymondham | NR18
 £170,000

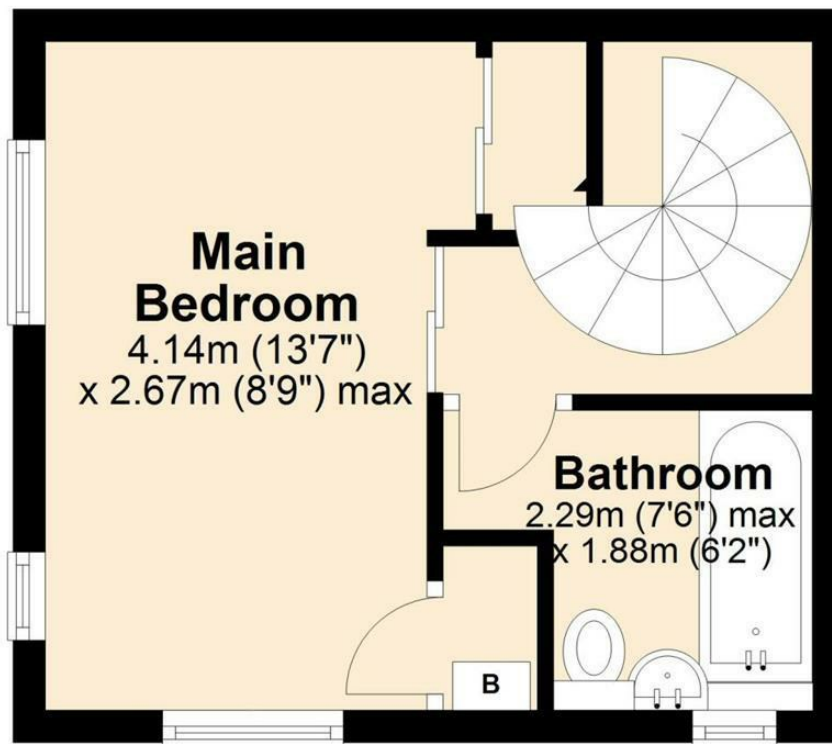
Ground Floor

Approx. 19.5 sq. metres (209.9 sq. feet)



First Floor

Approx. 19.7 sq. metres (212.3 sq. feet)



Total area: approx. 39.2 sq. metres (422.2 sq. feet)

Energy Efficiency Rating		Current	Potential
Very energy efficient - lower running costs			
(92 plus) A			91
(81-91) B			
(69-80) C			
(55-68) D		64	
(39-54) E			
(21-38) F			
(1-20) G			
Not energy efficient - higher running costs			
England & Wales		EU Directive 2002/91/EC	

Disclaimer – In accordance with the Property Misdescriptions Act, the company gives notice that all descriptions, references to condition, necessary permissions for use and other details are given in good faith and believed to be correct, but any intending purchasers do not rely on them as statements of fact, but must satisfy themselves by inspection or other means, as to their accuracy.

abbotFox presents this one bedroomed, end terraced house, nestled within a quiet close within a short walk of Wymondham Town Centre.

Occupying a prime position, which affords a sense of peace and quiet, yet the convenience of living within the town, and providing excellent access to the A11, this home represents an ideal opportunity for any first time buyer.

The accommodation is neatly arranged over two floors, with a spacious lounge diner and kitchen to the ground floor and a spacious double bedroom and bathroom to the first floor. Offered to the market with no onward chain, an internal viewing comes highly recommended.

